

Slop sinks 3180 / 3181 / 3182

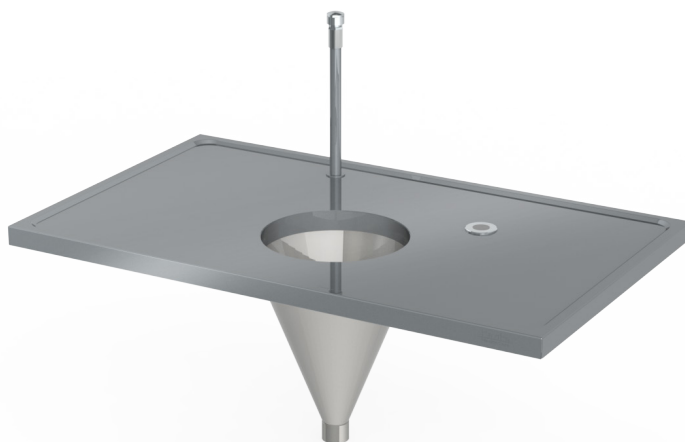
Slop sink 3180 is a wall-mounted sink with edge flushing that is well-suited for laboratories and for pouring and flushing excretions, small tissue fragments etc. into the drain. The sink is flushed using the push-button tap.

Sinks 3181 and 3182 are mounted on to the sink, work table or fume cupboard top. In addition to mechanical rinsing, a touch-free mechanism can be used.

A slop closet is recommended for flushing larger disposable solid and fluid waste.



Slop sink 3180



Slop sink 3182



Slop sink 3181

TECHNICAL INFORMATION

Models	3180 Slop sink, push button rinsing 3181 Slop sink mountable on to table, push button rinsing 3182 Slop sink mountable on to table, touch-free rinsing
Material	Acid-proof steel AISI 316
Sink measurements (width x depth x height)	3180 400x400x270 mm 3181 Ø250x300mm 3182 Ø250x300mm
Accessories included	Plastic trap 3180 hinged grid 3181 and 3182 suction protection valve
Accessories	3181 removable lid 3182 removable lid
Electrical connections	3181 ja 3182 plug for a standard socket 3180 mechanical operation, no electrical connection
Connections	Cold water connection DN15-connection (1,0–4,0 bar pressure) 3180: Drain connection DN70 3181 and 3182: 1 ½ inch external thread
Flush valve	Depending on the model Manual Franke Aqualine AQRM464 Touch-free Franke Protronic AQUA402
Installation	3180 installation height: upper brackets (2 pc) approx. at 900mm (mounting distance 180mm) and lower brackets at 320mm mountable into wall with screws water and drain connections
Manufacturer	Kavika HealthCare Oy