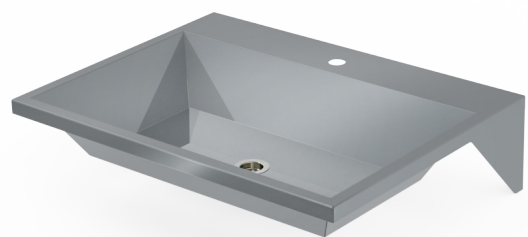


Surgeons' hand wash basins 7110 / 7111

A surgeons' hand wash basin is a practical and hygienic solution. The shape of the basin's front edge is designed to direct any water dripping from the elbows back into the basin. The polished surface and rounded edges make the basin easy to clean and disinfect.

Hand wash basins can be ordered for series assembly.



TECHNICAL INFORMATION

Material	Stainless steel AISI 304
Model	7110 shaped front edge 7111 straight front edge
Surface treatment	7110: Electric polishing 7111: Sanded, Electric polishing available
Measurements (width x depth x height)	1000x675x150mm
Accessories included	A bottom valve (stench trap is not included in delivery)
Connections	Drain connection
Installation	Wall mounting
Manufacturer	Kavika HealthCare Oy