

INSPIRATION CATALOGUE

ZYSTM CARE

z y s t m[®]

FOREWORD

This catalogue is for your inspiration and we hope that it shows our devotion to providing uncompromising quality, functionality and design.





CONTENT

Reception area	6	Storage	31
Bed Area	8	Logistic storage	40
Maternity and childrens ward	12	iRoom.	44
Ambulant clinic	14	Trolleys	46
Medicine room	18	Kitchens	52
Clean room-GMO-Cytostatica	22	Staff	56
Clinical biochemical department	28	Pathology.	57

RECEPTION AREA





③ curved counter for reception area

BED AREA



- ① bed unit with tall cabinet for patient lift
- ② pass through cabinet from corridor to bed unit
- ③ bed unit panel





①



②

① data table /EPR table
② Bed side table

HONESTY
COMMITMENT
COURAGE
COMMUNICATION

MATERNITY AND CHILDRENS WARD





- ① changing table with fixed height for guest toilets
- ② height-adjustable changing table and bath
- ③ height-adjustable changing table and bath

AMBULANT CLINIC



①



②





① laminate top cabinet, worktop and suspended base cabinet

② drawer cabinets with stainless steel worktop - optional drawer partitions and trays/baskets



- ① medicine room with height-adjustable table and DETRA shelves ensuring flexibility
- ② The DETRA system is easy-to-clean and very stable



③



④

- ③ storage cabinets with a great overview
- ④ mobile cabinets with display doors

Sodium benzoate
Sodium citrate
BIMB DI BOUTCHER BAKER
net. weight: 100 g
1 2 3
EXP. DATE

Aprépitant
Aprépitant
EMEND cps 1x125mg
2x60mg (en 3)
(3 PC)
Qté min

Nétupitant
Palonosétron
AKYNZEO cps 300mg/0.5mg
(PC)
Qté min

DEXAMETHASONE cps 20mg
(eo 50) /PM PIC
(50 PC)
Qté min:

Dexaméthasone
DEXAMETHASONE cpr 4mg
(eo 20)
(20 PC)
Qté min:
55

680579740038
Dexamethasonum 4 mg, Lactosum monohydratum
Croscarmellosem natricum conexum, Excipientia
Zulassungsinhaber/Titulaire de l'autorisation
Galepharm AG, Zürich



Lansoprazol

TEWISTA EXPIDIT 30 mg
(en 20)

(20 PC)

Ondansétron

ONDANSETRON ODT Labatoc
cp orodisp 4mg (eo 10)

(10 PC)

Qté min:



Métoclopramide chlorhydrate

PRIMPERAN cpr 10mg (eo
40)

(40 PC)

Qté min:



647

CLEAN ROOM - GMO - CYTOSTATICA







①



②



③

- ① fire resistant lead lined cabinets
- ② Zystm interlock type 2
- ③ step over bench for clean room
- ④ pass through cabinet with interlock

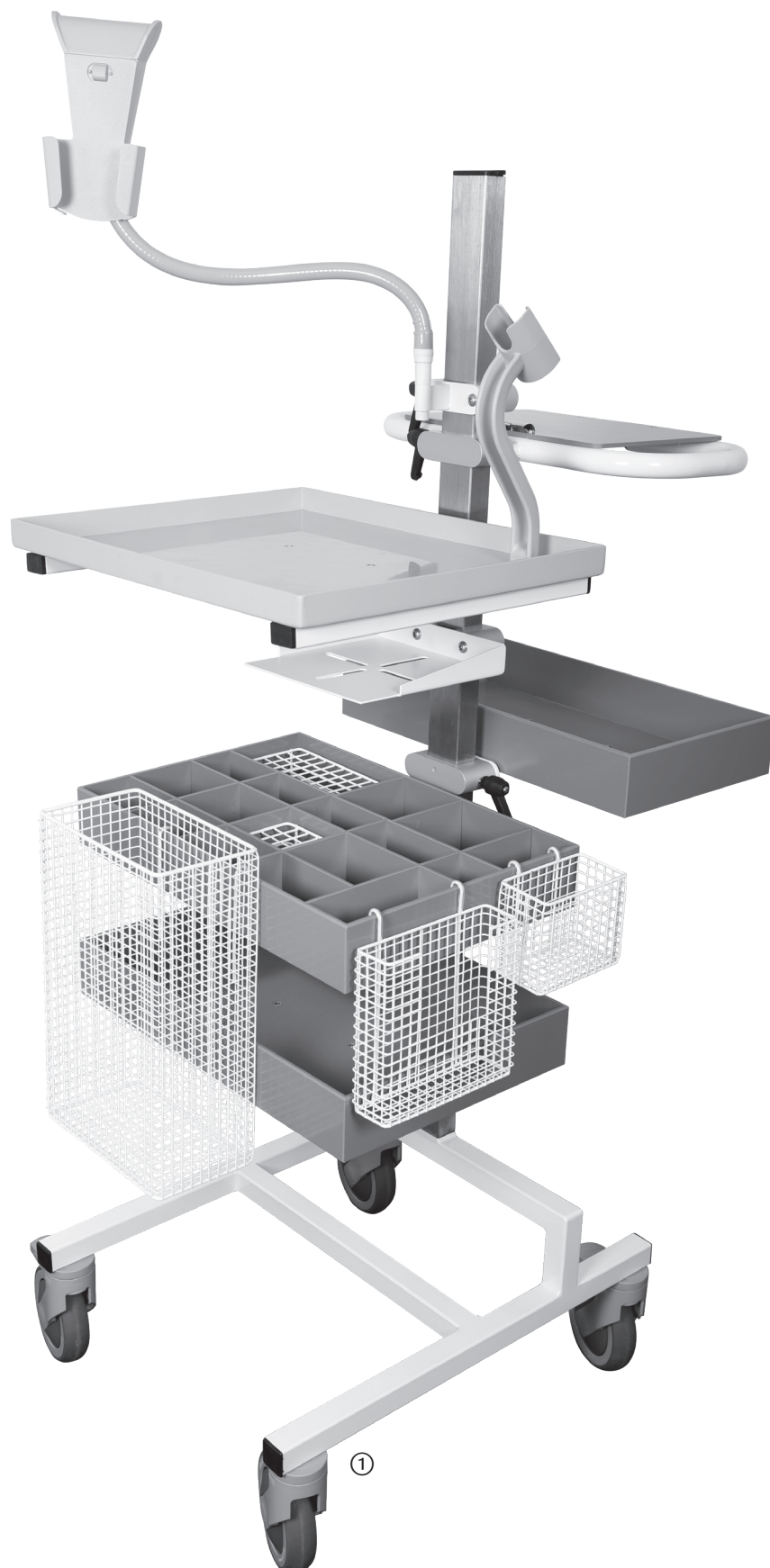






- ① sterile centre with storage cabinets and oblique covering
② sluice cabinet with trolley system

CLINICAL BIOCHEMICAL DEPARTMENT





- ① combi cart for ECG and phlebotomy
- ② phlebotomy cart



- ① microscopy tables
- ② microscopy tables
- ③ tall cabinet with oblique top cover

STORAGE





- ① tall cabinet with solid laminate door
- ② pull out cabinet with baskets
- ③ tall cabinet with glass/aluminium door
- ④ possibility for coloured doors and cover plates





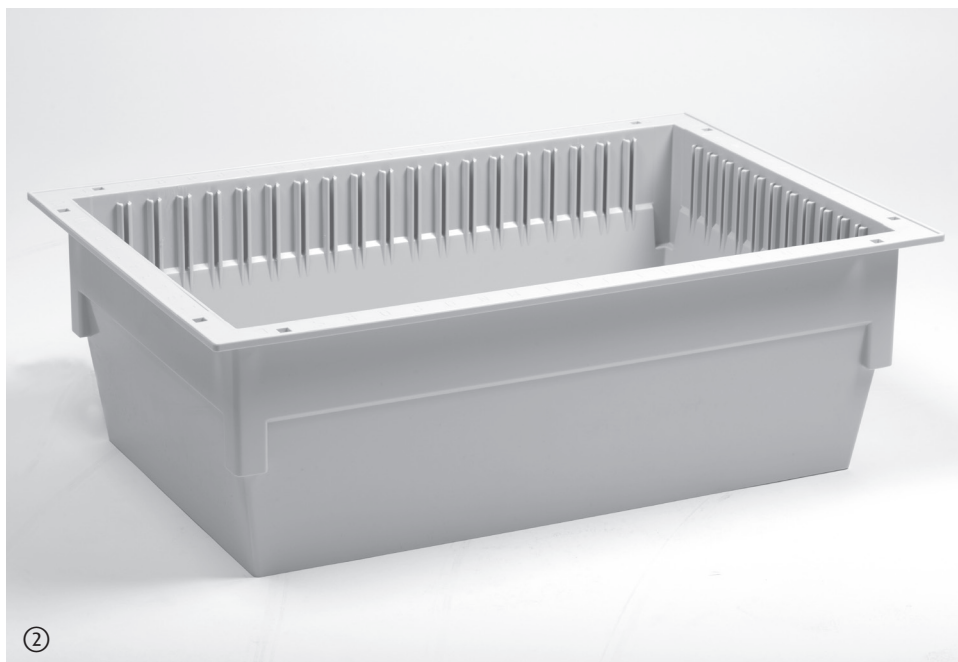


- ① glass doors with aluminium frames
- ② storage cabinets with straight covering
- ③ storage cabinets





- ① storage room with open racks for trays and baskets
- ② wash room with epoxy worktop and low level shelf
- ③ glass sliding doors for emergency room providing clear visability of content
- ④ telescopic shelf for easy access

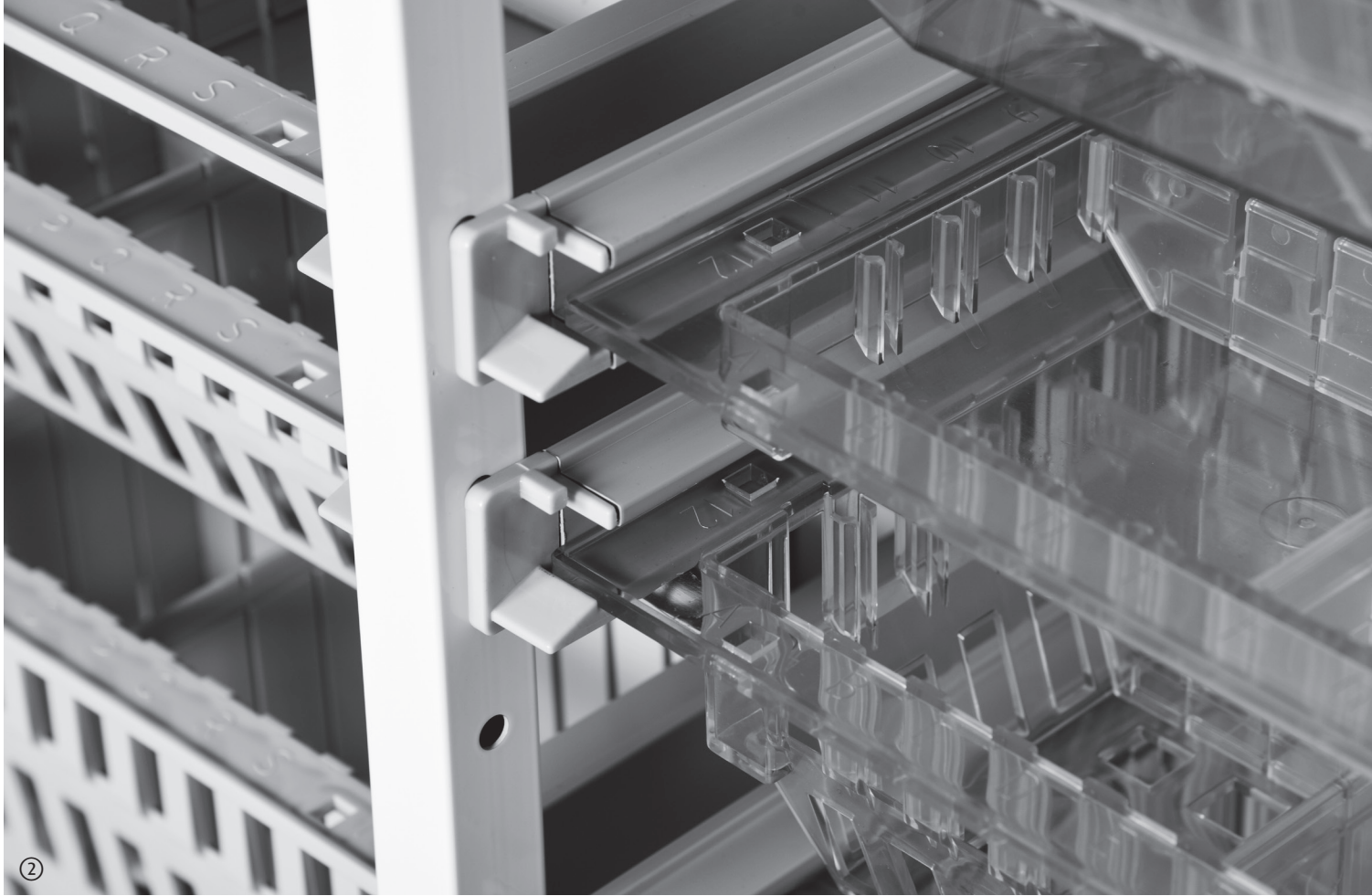


① drawers with double side and 100% pull out
② storage tray

SUCCESS = TALENT x PREPARATION
x EFFORT x COMMITMENT

LOGISTIC STORAGE





- ① rack with trays and baskets in various heights H 50, H 100 and H 20
- ② trays and baskets in rack
- ③ trays and baskets





- ① racks with trays and baskets
- ② open trolleys for trays and baskets
- ③ cabinets with baskets

IROOM





②



③

- ① i-ROOM system
- ② i-ROOM RFID system real-time monitoring
- ③ i-ROOM RFID system

TROLLEYS





- ① steel trolley
- ② cabinet trolley
- ③ cabinet trolley with modular inserts

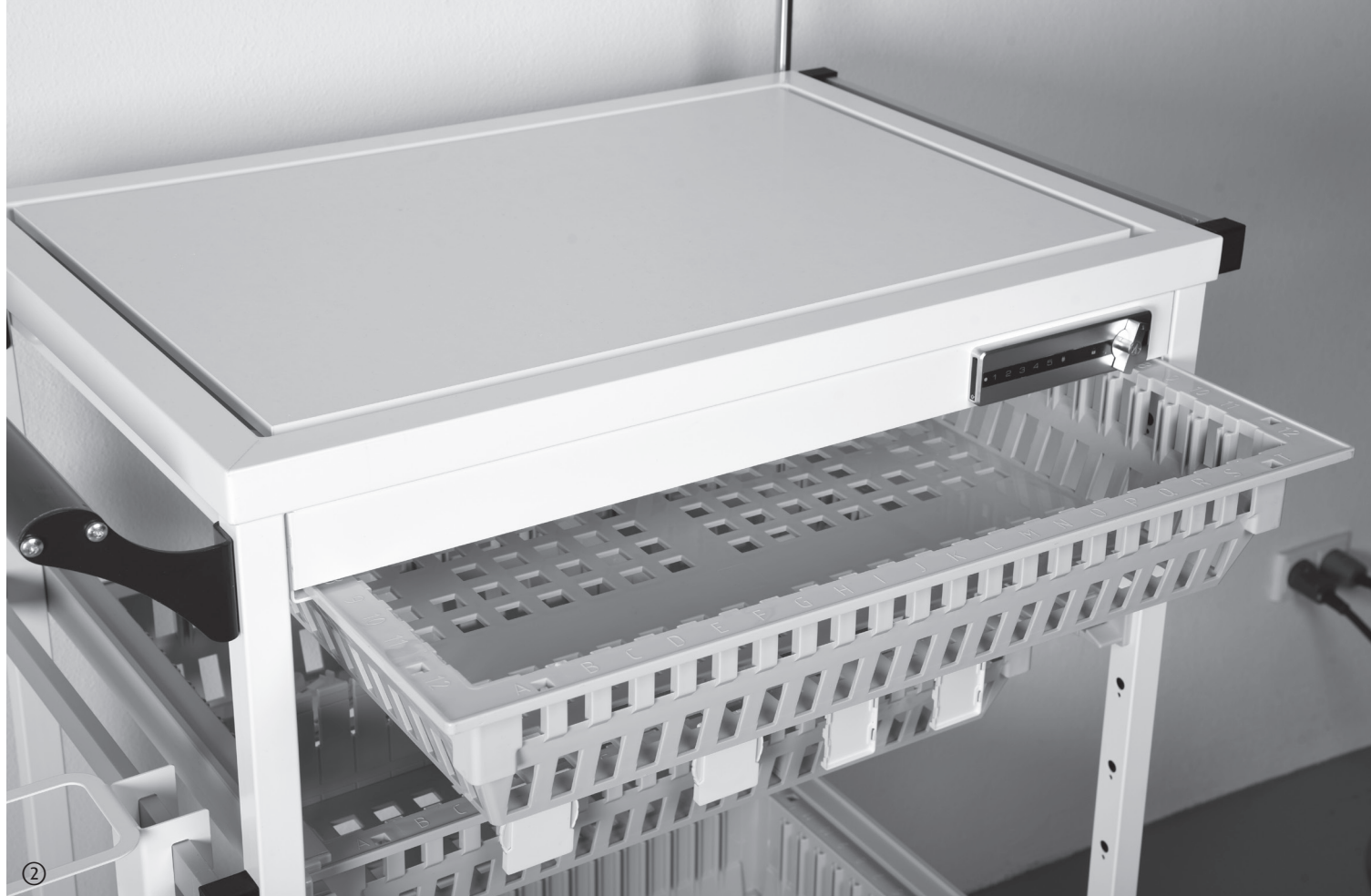




- ① closed trolleys with roller shutter door or drawers
- ② MPO trolley
- ③ MPO trolley
- ④ MPO trolley
- ⑤ treatment trolley for defibrillator / crash cart







- ① open modular trolley
- ② open modular trolley
- ③ open modular trolley

KITCHENS





②



③

- ① kitchen
- ② kitchen
- ③ traning kitchen



① kitchenette
② kitchenette

WE SAY WHAT WE DO
WE DO WHAT WE SAY



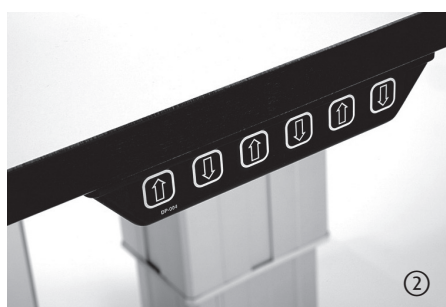
- ① patient/staff lockers with Ruko locks
- ② kitchen and staff lockers
- ③ mail delivery in required sizes
- ④ environment with carving fume cabinets
- ⑤ carving fume cabinet
- ⑥ sink with strainer

PATHOLOGY





①



②



③



④



- ① microscopy table
- ② microscopy table
- ③ microscopy tables
- ④ microtome table
- ⑤ rinsing table
- ⑥ rinsing table





① autopsy tables in stainless steel



DENMARK

Zystm A/S
Lillelundvej 18
DK 7400 Herning
Tel: +45 96 66 66 60
info@zystm.com
www.zystm.com

ENGLAND

Zystm UK Limited
Gibson House, Lancaster Way
Ermine Business Park,
Huntingdon PE29 6XU
Tel: +44 1480 595260
post.uk@zystm.com
www.zystm.com

NORWAY

Zystm AS
Klokkegårdveien 5
N 1711 Sarpsborg
Tel: +47 41 53 88 00
post.n@zystm.com
www.zystm.com

BELGIUM

Zystm MATTEO
Nieuwstraat 8
BE 2275 Lille (Antwerp)
Tel: +32 3 369 11 08
info@mattteo.com
www.mattteo.com