

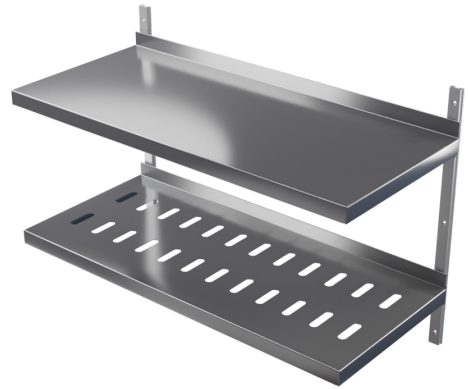
## Wall racks 5020

## Floor racks 5040

The wall-mounted and floor-standing shelving units are custom-made according to the client's measurements, within the dimensions specified in the technical information.

Both shelving units feature adjustable height. The stainless steel shelf options include flat shelves and perforated shelves, with the wall-mounted shelving unit also available with slatted grid shelves.

The floor-standing shelving unit can also be manufactured with shelves welded permanently to the frame.



#### TECHNICAL INFORMATION

Models	5020 Wall rack 5040 Floor rack
Materials	Stainless steel AISI 304 (standard) Also available acid-proof steel AISI 316 5020 wall rail anodized aluminum
Standard lengths	5020: maximum length of one unit 2800mm 5040: maximum length of one unit 1200mm
Standard depths	5020: 250, 300, 350, 400 and 500mm 5040: 300, 400, 500, 600mm
5020 wall rail lengths	300, 600, 900, 1200, 1600, 2000mm
Shelf alternatives	5020: solid plate shelf, perforated plate shelf, grate shelf 5040: solid plate shelf, perforated plate shelf
Height adjustment	Freely adjusted
Installation	5020: With wall rails and brackets 5040: Legs with adjustment pads, wall mounting is recommended for narrow and tall units
Manufacturer	Kavika HealthCare Oy